

Air cargo pallet

The pallet shipper range meets all air cargo requirements. We ensure and guarantee the quality of our system to maintain the products at temperature controlled transport.

Benefits

- Quality pharma material
- Sustainable & robust
- Flat pack or pre-assembled
- Ease of assembly



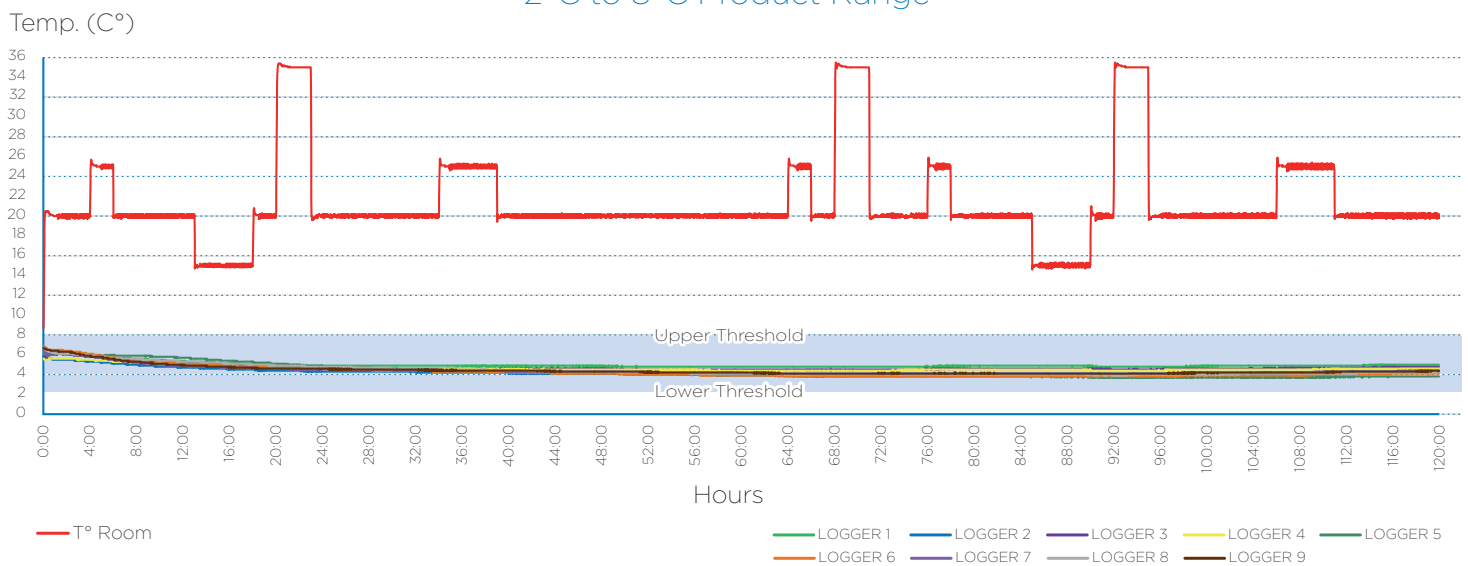
www.exampackaging.com

Tailor made cold chain solutions

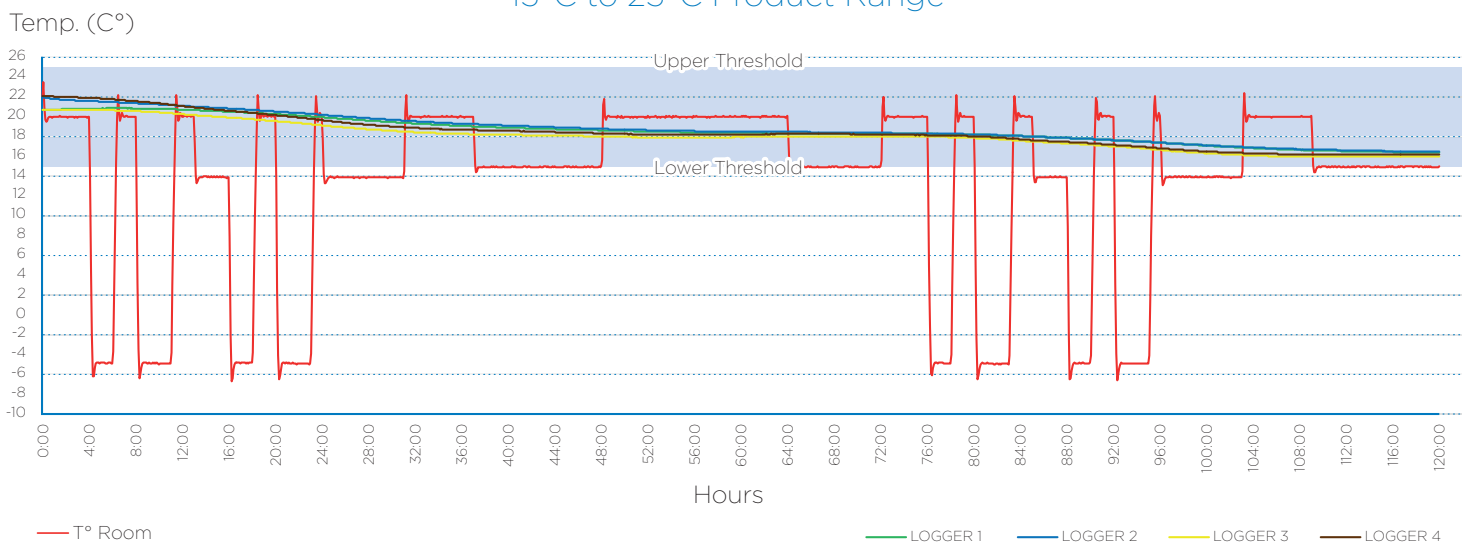
Thinking Green

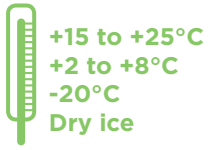
Reference	Content (L)	Wall (mm)	Int. dims. (mm)					Ext. Dims. (mm)				
			L	x	W	x	H	L	x	W	x	H
IBCA020050	200	50	690	x	490	x	580	800	x	600	x	700
IBCA029760	297	60	1070	x	670	x	414	1200	x	815	x	570
IBCA035045	350	45	1095	x	690	x	460	1200	x	800	x	550
IBCA070040	700	40	1110	x	710	x	890	1200	x	800	x	1000
IBCA120060	1200	60	1065	x	850	x	1280	1200	x	1000	x	1580
EXAMBOX200060-01	2000	60	1445	x	1055	x	1310	1565	x	1190	x	1580
EXAMBOX200060AA-03	1290	60	1273	x	898	x	1128	1565	x	1190	x	1580

120 Hours to Exam Summer Transporter Profile 2°C to 8°C Product Range



120 Hours to Exam Winter Transporter Profile 15°C to 25°C Product Range





2-125L



48-120h+



High quality insulated polyurethane shippers

This wide range of insulated packaging is perfectly convenient for all types of shipments thanks to the various available payloads and wall thicknesses. The insulated containers are moulded in technical polyurethane foam in combination with water-resistant cardboard.

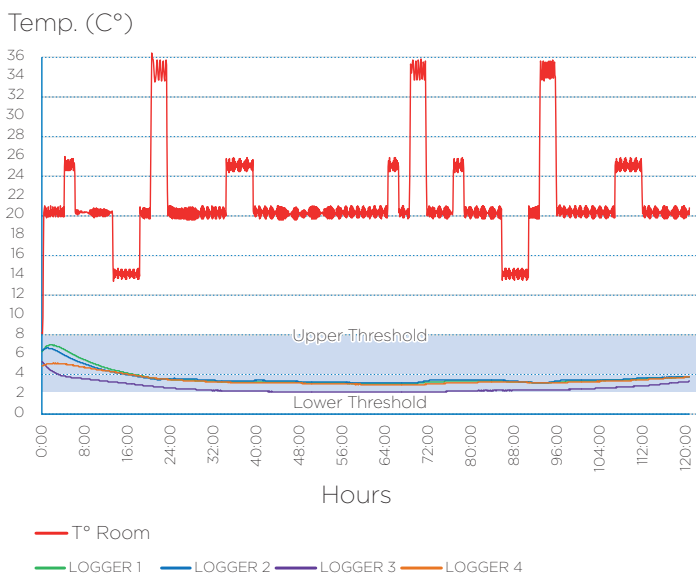
Benefits

- Monobloc polyurethane
- Size customizable to specific needs
- Pre-qualified systems

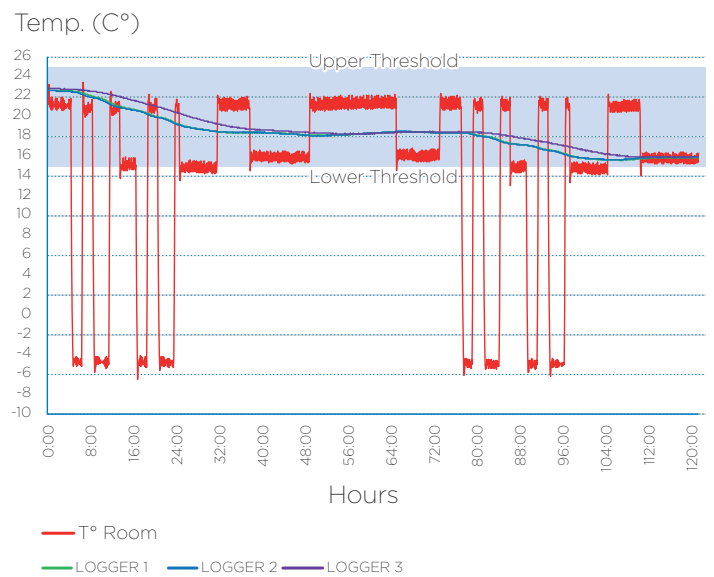


Reference	Content (L)	Wall (mm)	Int. dims. (mm)			Ext. Dims. (mm)						
			L	x	W	x	H	L	x	W	x	H
IBCA000235	2	35	120	x	120	x	180	200	x	200	x	260
IBCA000330	3	30	180	x	180	x	100	250	x	250	x	175
IBCA000340	3	40	175	x	140	x	150	261	x	226	x	245
IBCA000530	5	30	180	x	180	x	170	250	x	250	x	250
IBCA000545	5	45	175	x	175	x	165	280	x	280	x	280
IBCA001040	10	40	220	x	220	x	220	310	x	310	x	320
IBCA001065	10	65	210	x	210	x	225	350	x	350	x	380
IBCA001145	11	45	260	x	260	x	165	360	x	360	x	280
IBCA001545	15	45	330	x	270	x	160	430	x	370	x	270
IBCA002045	20	45	275	x	275	x	275	380	x	380	x	390
IBCA002245	22	45	305	x	305	x	245	400	x	400	x	350
IBCA002360	23	60	305	x	235	x	320	440	x	365	x	470
IBCA003040	30	40	360	x	300	x	280	450	x	390	x	380
IBCA004845	48	45	510	x	310	x	310	610	x	410	x	420
IBCA005260	52	60	520	x	420	x	240	650	x	550	x	380
IBCA005540	55	40	430	x	430	x	300	530	x	530	x	420
IBCA007545	75	45	500	x	300	x	500	600	x	400	x	600
IBCA010050	100	50	490	x	380	x	520	600	x	500	x	640
IBCA012570	125	70	660	x	460	x	420	810	x	610	x	580

120 Hours to Exam Summer Transporter Profile
2°C to 8°C Product Range



120 Hours to Exam Winter Transporter Profile
15°C to 25°C Product Range





12-30-60L



Reusable insulated polyurethane containers

Rigid and reusable polypropylene boxes with insulating walls in polyurethane foam.

Benefits

- Inner walls are replaceable
- Quality pharma material
- Pre-qualified systems



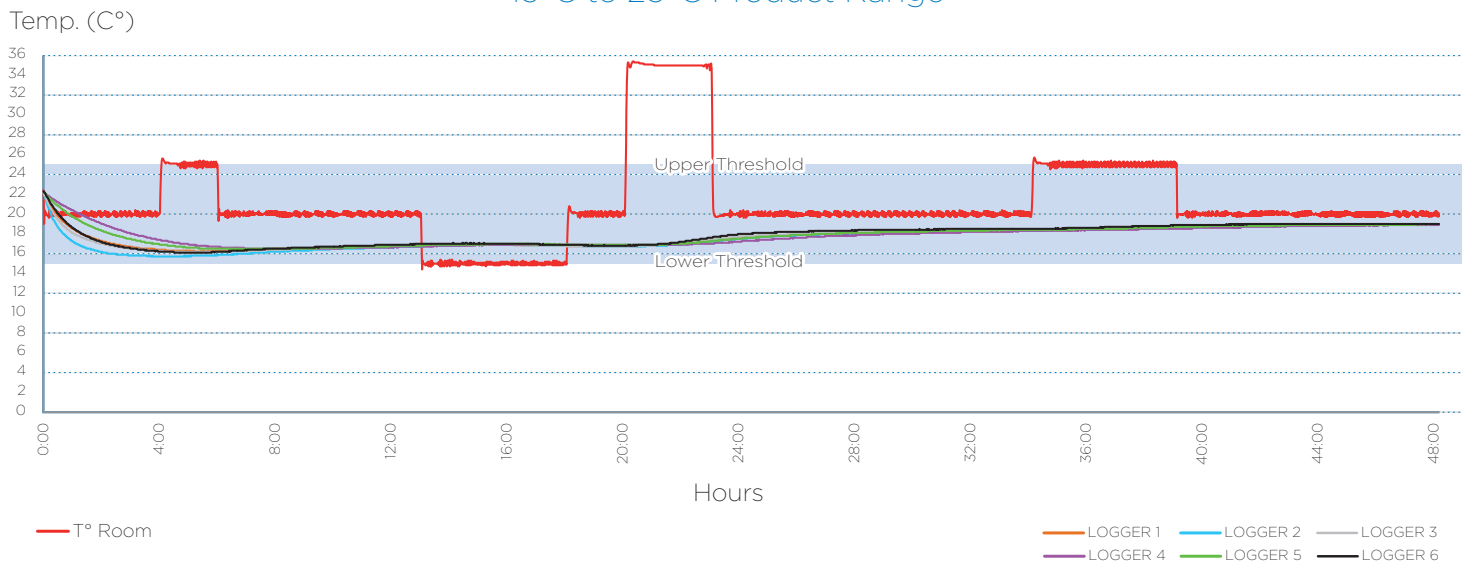
www.exampackaging.com

Tailor made cold chain solutions

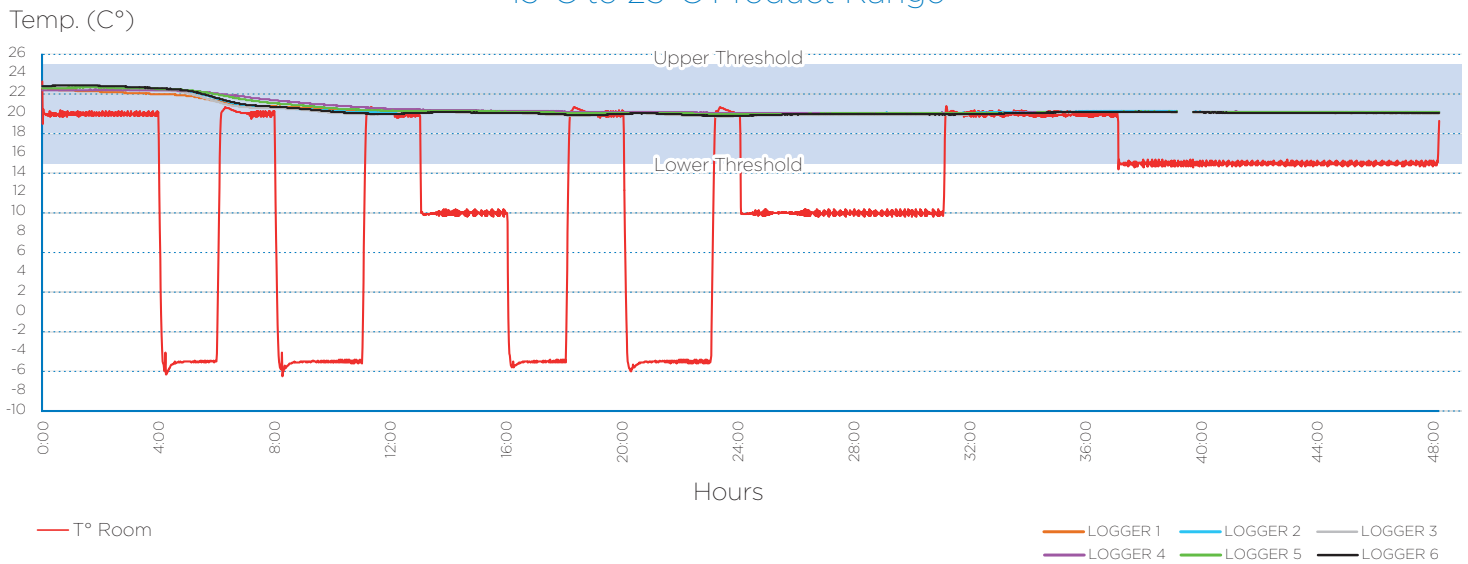
Thinking Green

Reference	Content (L)	Wall (mm)	Int. dims. (mm)					Ext. Dims. (mm)				
			L	x	W	x	H	L	x	W	x	H
ISOT001240	12	40	285	x	185	x	240	400	x	300	x	325
ISOT003040	30	40	485	x	285	x	240	600	x	400	x	325
ISOT006040	60	40	480	x	280	x	425	600	x	400	x	544

48+ Hours to Exam Summer Transporter Profile 15°C to 25°C Product Range



48+ Hours to Exam Winter Transporter Profile 15°C to 25°C Product Range




+15 to +25°C
+2 to +8°C
-20°C
Dry ice


48-72h+



Dangerous goods packaging

Designed for the transport of dangerous goods in accordance with IATA regulations for toxic, infectious (UN2814) and biological (UN 3373) substances.

Benefits

- Available in insulated version (with injected polyurethane foam) or non-insulated
- UN approved for biological, toxic or infectious products and diagnostic samples
- Pharma quality material
- Prequalified systems



EXAM UN APPROVED PACK



TEMPERATURE CONTROLLED

UN toxic boxes – Toxic substances

Reference	Content (L)	Wall (mm)	Int. Dims. (mm)			Ext. Dims. (mm)		
			L	W	H	L	W	H
TOXC001040	10,6	40	220	220	220	310	310	320
TOXC003040	30,2	40	360	300	280	450	390	380
TOXC005540	55,5	40	430	430	300	530	530	420



UN2814 & UN2900 boxes – Infectious substances

Reference	Content (L)	Wall (mm)	Int. Dims. (mm)			Ext. Dims. (mm)		
			L	W	H	L	W	H
INFC001040	10,6	40	220	220	220	310	310	320
INFC003040	30,2	40	360	300	280	450	390	380



UN3373 boxes – Biological substances category B

Reference	Content (L)	Wall (mm)	Int. Dims. (mm)			Ext. Dims. (mm)		
			L	W	H	L	W	H
BIOS001040	10,6	40	220	220	220	310	310	320
BIOS003040	30,2	40	360	300	280	450	390	380
Mobile Pack	5	40	190	120	225	270	200	305
UNBI000235 (insulated part)	2	35	130	110	135	206	186	270
(ambient part)			180	150	35			



NON - TEMPERATURE CONTROLLED

UN2814 & UN2900 boxes – Infectious substances

Reference	Content (L)	Int. Dims. (mm)			Ext. Dims. (mm)		
		L	W	H	L	W	H
UNAM001250	1250 ml	115	115	180	120	120	200



UN3373 boxes – Biological substances category B

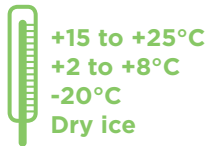
Reference	Content (L)	Int. Dims. (mm)			Ext. Dims. (mm)		
		L	W	H	L	W	H
BSAMAS1250	125	120	120	200	115	115	180
BSAMAS150x180x40	1,08	150	180	40	175	190	40
BSAMAS150x180x80	2,16	150	180	80	175	190	80
BSAMAS385x305x125	14,67	385	305	125	400	322	130



www.exampackaging.com

Tailor made cold chain solutions

Thinking Green



+15 to +25°C
+2 to +8°C
-20°C
Dry ice



Light

5-70L



24-48h+



Expanded polystyrene boxes

The EPS packaging is ideal for low cost solutions with a requirement for short haul shipments up to 48 hours. The insulated containers are light and semi- reusable.

Benefits

- Customized models available on demand
- Cardboard outers available for most of the models (also customizable)
- Pre-qualified systems



Reference	Content (L)	Wall (mm)	Int. dims. (mm)					Ext. Dims. (mm)				
			L	x	W	x	H	L	x	W	x	H
EPST000540	5	40	190	x	120	x	225	270	x	200	x	305
EPST000940	9	40	300	x	170	x	180	380	x	250	x	260
EPST001530	15	30	250	x	250	x	250	310	x	310	x	310
EPST002130	21	30	340	x	270	x	200+30	400	x	330	x	315
EPST002640	26	40	435	x	235	x	255	515	x	315	x	335
EPST004030	40	30	355	x	255	x	450	415	x	315	x	515
EPST004530	45	30	445	x	295	x	340	505	x	355	x	405
EPST005450	54	50	545	x	295	x	340	645	x	395	x	440
EPST006030	60	30	531	x	331	x	334	595	x	395	x	400
EPST006035	60	35	435	x	315	x	440	505	x	385	x	510
EPST006930	69	30	531	x	331	x	390	595	x	395	x	450





EX-Freeze[®]

EX-Chill[®]

EX-Phase 05[®]

EX-Phase 18[®]

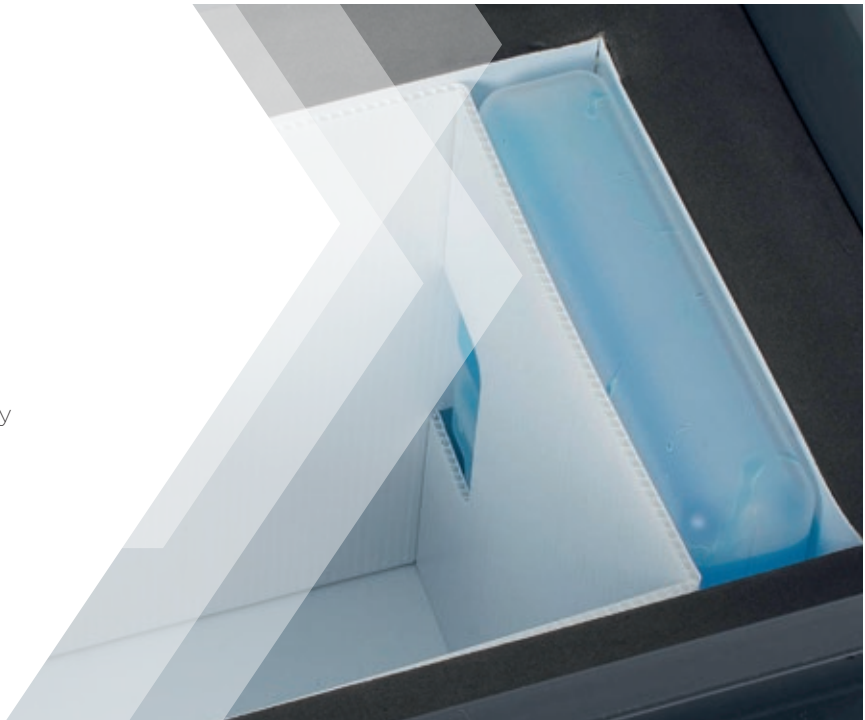
EX-Ambi[®]

Range of non-toxic water or organic PCM **cool packs**

A complete range targeting all standard cold chain temperature bands. The cool packs are reusable and can be placed into cardboard outers for easy handling.

Benefits

- Our complete range are produced in HDPE bottle packs which are sealed using a heat welding process for extra security.
- All materials used are non-toxic and environmentally friendly.
- The cool packs can be bought as part of a cold chain solution or as separate components (minimum order quantities apply).
- For ease of use the range can be provided in cardboard tray holders containing multiple cool packs - Dimensions & available types on request





EX-Freeze® : -25 to -15°C

Reference	Int. dims. (mm)					Nominal Weight (g)
	L	x	W	x	H	
EX- Freeze®600	160	x	115	x	38	650 (±20)
EX- Freeze®300	160	x	80	x	25	290 (±10)



EX-Chill® : +2 to +8°C

Reference	Int. dims. (mm)					Nominal Weight (g)
	L	x	W	x	H	
EX- Chill®600	160	x	115	x	38	565 (±20)
EX- Chill®300	160	x	80	x	25	280 (±10)



EX-Phase 05® : PCM for +2 to +8°C (organic material)

Reference	Int. dims. (mm)					Nominal Weight (g)
	L	x	W	x	H	
EX- Phase 05®600	160	x	115	x	38	520 (±30)
EX- Phase 05®300	160	x	80	x	25	250 (±30)



EX-Phase 18® : PCM for +15 to +25°C (organic material)

Reference	Int. dims. (mm)					Nominal Weight (g)
	L	x	W	x	H	
EX- Phase 18®600	160	x	115	x	38	520 (±10)
EX- Phase 18®300	160	x	80	x	25	250 (±10)



EX-Ambi® : +15 to +25°C

Reference	Int. dims. (mm)					Nominal Weight (g)
	L	x	W	x	H	
EX- Ambi®600	160	x	115	x	38	565 (±20)
EX- Ambi®300	160	x	80	x	25	280 (±10)